

**Wake up to this view
every morning**



Introducing

SKYHIGH
T O W E R S

FIRST

RESORT HOMES®

THEME PROJECT OF PUNE

SKYHIGH
T O W E R S
Adj. Infosys-II, Hinjawadi

2 & 3 BHK Homes

The homes are aesthetically laid with painstaking attention to detail and with an aim to deliver the optimum utilization of space.

Everything you've ever expected from a home,
Sky High exceeds it.



ENVELOPED BY HILLS & FOREST IN THE BACKYARD

One of our most fascinating natural gems is the expanse of cascading hills neighboring Sky High Towers. This breathtaking landscape stretches as far as your eyes can see, making it a truly rare find.

Well-connected and easily accessible, it is at one of the highest altitude of Pune with rare eye catching city views in the heart of India's Most Popular IT Park in Pune.



ABOUT THE DEVELOPER



You first.

At Mittal Brothers, our customers are our foremost priority. We understand that if they are happy, everything else falls into place and our purpose as a company is met. Such a philosophy entails an in-depth understanding of our customers, their beliefs and their needs, because only when we understand them, can we shape ourselves to serve them. For us, the customer is the soul of the company. And it is in serving them that we find the greatest satisfaction.



Adj. Infosys-II, Hinjawadi

Completed Phase
A, B, C - Tower



SHOT AT SITE

JOY OF LIVING AMPLIFIED

Experience the vibe at
Club High



SHOT AT SITE

Club High is the new buzz in town. Tucked away in a secluded nook of Hinjewadi, it is an oasis of leisure, rejuvenation and entertainment, busting with the finest lifestyle amenities. Pick from exquisite experiences like Pune's first state-of-the-art outdoor gym, Full Length swimming pool, a large football field and many more.



SHOT AT SITE

PROFESSIONAL SPORTS AMENITIES FOR ALL

Sky High Towers comes with a perfect set of lifestyle amenities for everyone in the family.

FULL LENGTH
INFINITY
SWIMMING
POOL



[SHOT AT SITE]



[SHOT AT SITE]

Feel a wave of freshness sweep you off your feet. Cool off with a dip, play water polo with your cronies or just unwind on a comfy pool deck soaking in picturesque views of the hills. And to keep the little ones off your back, we have got a kids pool too, so they too can have a splash.



TENNIS COURT

Step up to the tennis court at Club High for a Wimbledon experience. Bjorn Borg, a former tennis champion, candidly characterized a tennis match as “a thousand little sprints.”

The quick thinking and anaerobic movements the sport demands keeps your mind occupied while giving your body a good workout.



SHOT AT SITE

DOLBY ATMOS

50 SEATER THEATRE



If you are a diehard movie buff, you will definitely love this the most. This world-class 50 seater theatre is all yours. Screen your favourite movies whenever you like. Invite friends and family over and have a time of your life.



[SHOT AT SITE]

KIDS PLAY AREA

There are days when you will need someone responsible to look after your child when you aren't around. The Kids play area at Club High is a safe haven for your little one at times like these. And there are plenty of toys and learning activities to keep even the most boisterous child amused.



BASKETBALL COURT



It's time to get your game on. Gather your crew and gear up for some on court action. Dribble. Drunk. Shoot. The basketball court is the place to show off your skills. If you haven't played it before, don't worry, the game will teach you to play.

SHOT AT SITE



BADMINTON COURT

Challenge your mind and body with a game of badminton at Club High. Playing badminton keeps you feeling healthy, enthusiastic and young. The game is widely considered as a healthy and fun sport, enjoyed by people of all ages.



[SHOT AT SITE]

OUTDOOR GYM



[SHOT AT SITE]

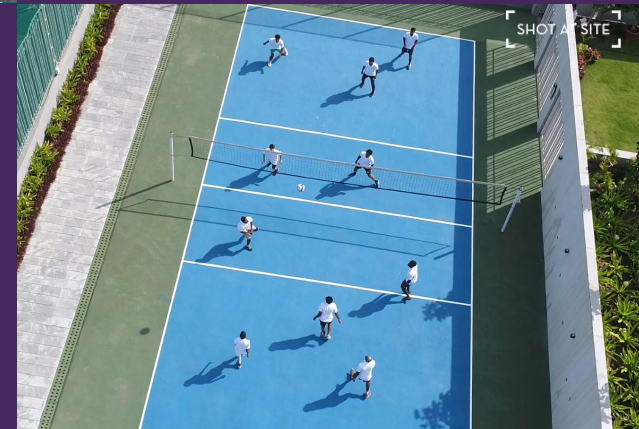
Burn more calories in Pune's first state-of-the-art outdoor gym. Outdoor workouts not only benefit your body but your mind too. The fresh air and increased oxygen outside helps release feel-good brain chemicals that put you in a fantastic mood.

SHOT AT SITE



VOLLEYBALL COURT

When you are done at the office, blow off some steam playing volleyball. Just make sure you bring your A-game along. Club High features a regulation - size court that adds just the right touch of seriousness.



[SHOT AT SITE]

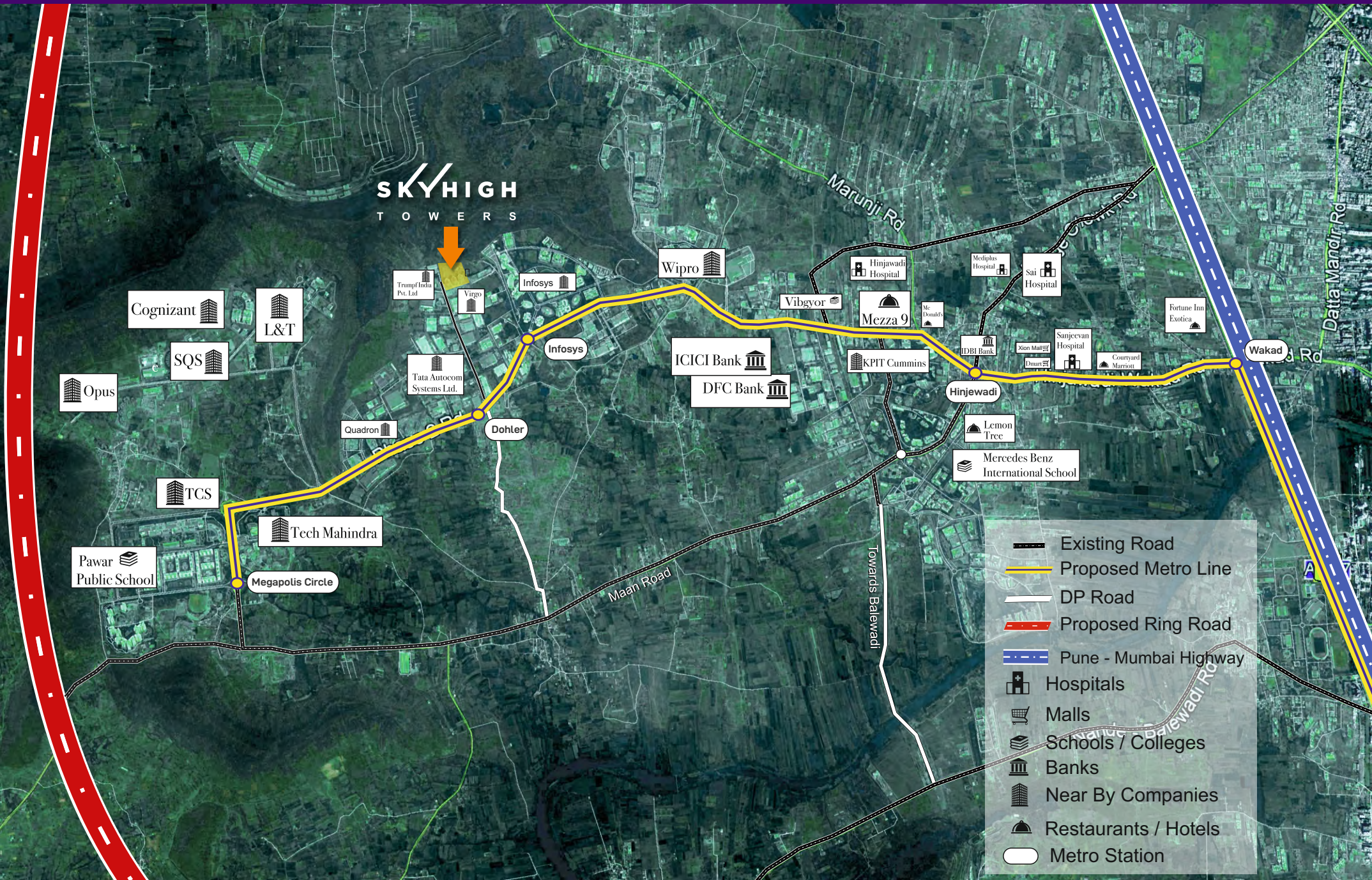
FUTSAL / CRICKET GROUND



[SHOT AT SITE]

In the midst of an urban forest is a breathtaking futsal / cricket ground. Whether it's to coach kids or just to blow off some steam, this is quite possibly the best private playground in the whole of Hinjewadi.

Satellite Location Map



WHY HINJEWADI ?



One of the active IT hubs of Pune, Hinjewadi has yet again registered high demand from consumers. It is not surprising considering the fact that most of the IT companies are housed in the locality, thereby spiralling the residential demand of the area.

Investing in Hinjewadi is always wise. Due to the office clamour, properties in this locality will always be in demand. Therefore, it definitely makes sense for an Investor to invest in a property here. Apart from the demand, price trends also support the investment decision.

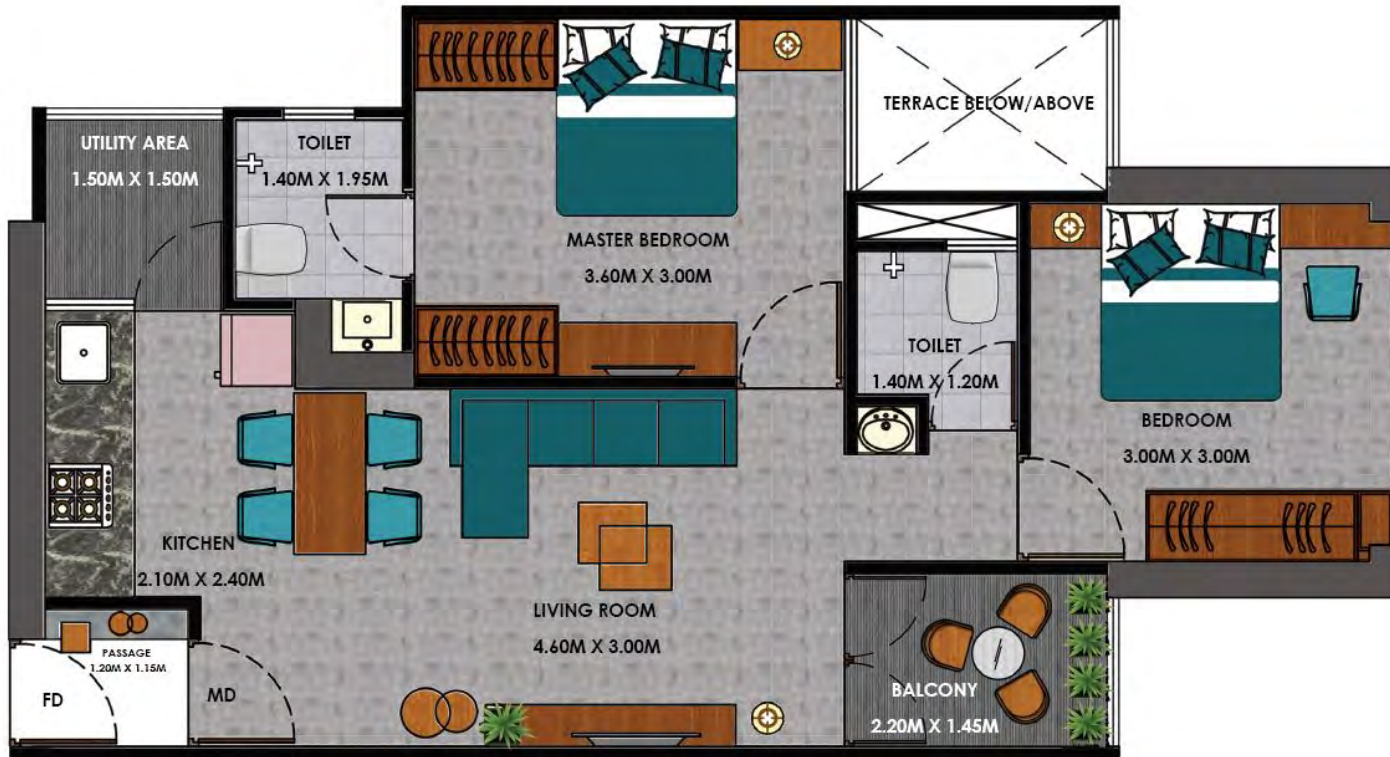


MORE LIVING PER SQFT

The apartments at Sky High Towers are designed to maximise your living spaces. Intelligently designed to make sure you get more out of every area, and that there is no wastage of any space.



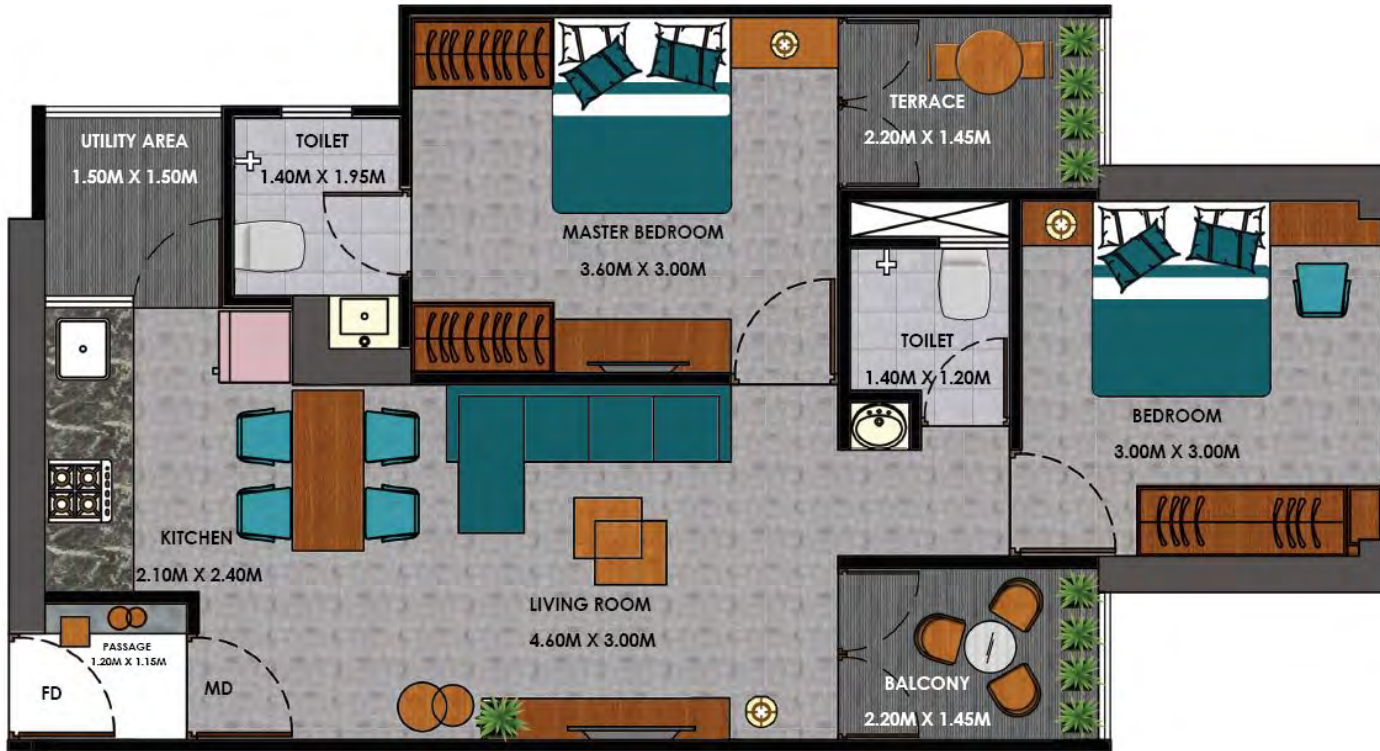
Unit Plan - 2 BHK PEARL



Area of Typical Unit in Sq. Mtrs.			
Particulars	Type A	Type B	Type C
Carpet	44.14	47.99	44.86
Enclosed Balcony	3.85	-	3.13
Open Balcony	5.19	5.19	5.19
Entrance Passage	1.36	1.36	1.36
Total Carpet Area	54.54	54.54	54.54

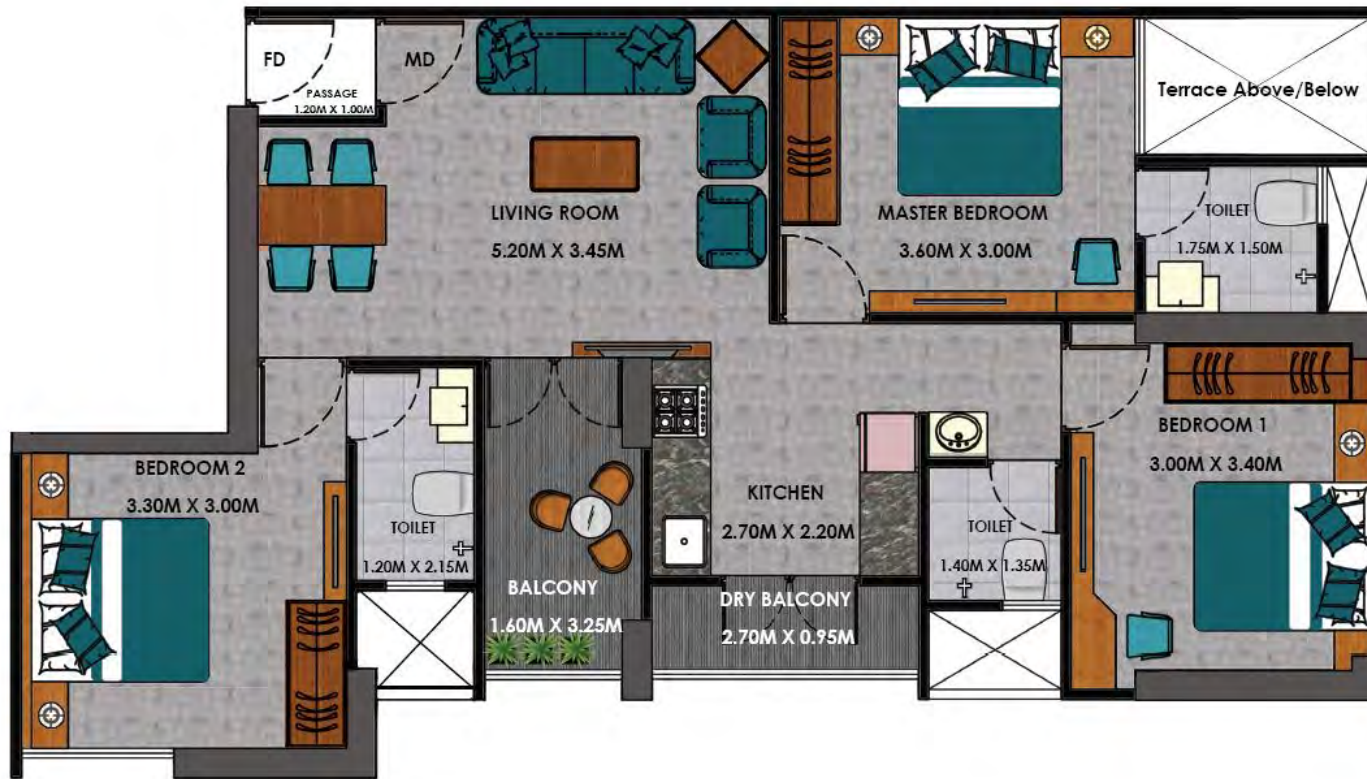
Disclaimer: The above unit plans and dimensions are Indicative and for reference purpose only. All dimensions are measured from unfinished surfaces for the ease of understanding. The areas are tentatively calculated as per MahaRera and are subjected to change as per selection of the apartment. The layout, partitions, openings, finishes, furnishing, etc. are indicative and for reference purpose only. The furniture and any other detail in the unit plan layout is indicative and part of presentation/ rendering only and shouldn't be referred/ treated as any offering/ commitment in any manner it may be. All contents herewith are subject to change w/o prior notice and the contents are not to scale. The details shown in the plan may vary from apartment to apartment. The unit plan is not a legal offering and all Information should only be treated as a concept. Carpet areas are issued by the project architect.

Unit Plan - 2 BHK EMERALD



Area of Typical Unit in Sq. Mtrs.			
Particulars	Type A	Type B	Type C
Carpet	44.38	48.23	45.01
Enclosed Balcony	3.85	-	3.13
Open Balcony	5.19	5.19	5.19
Terrace	2.94	2.94	2.94
Entrance Passage	1.36	1.36	1.36
Total Carpet Area	57.72	57.72	57.72

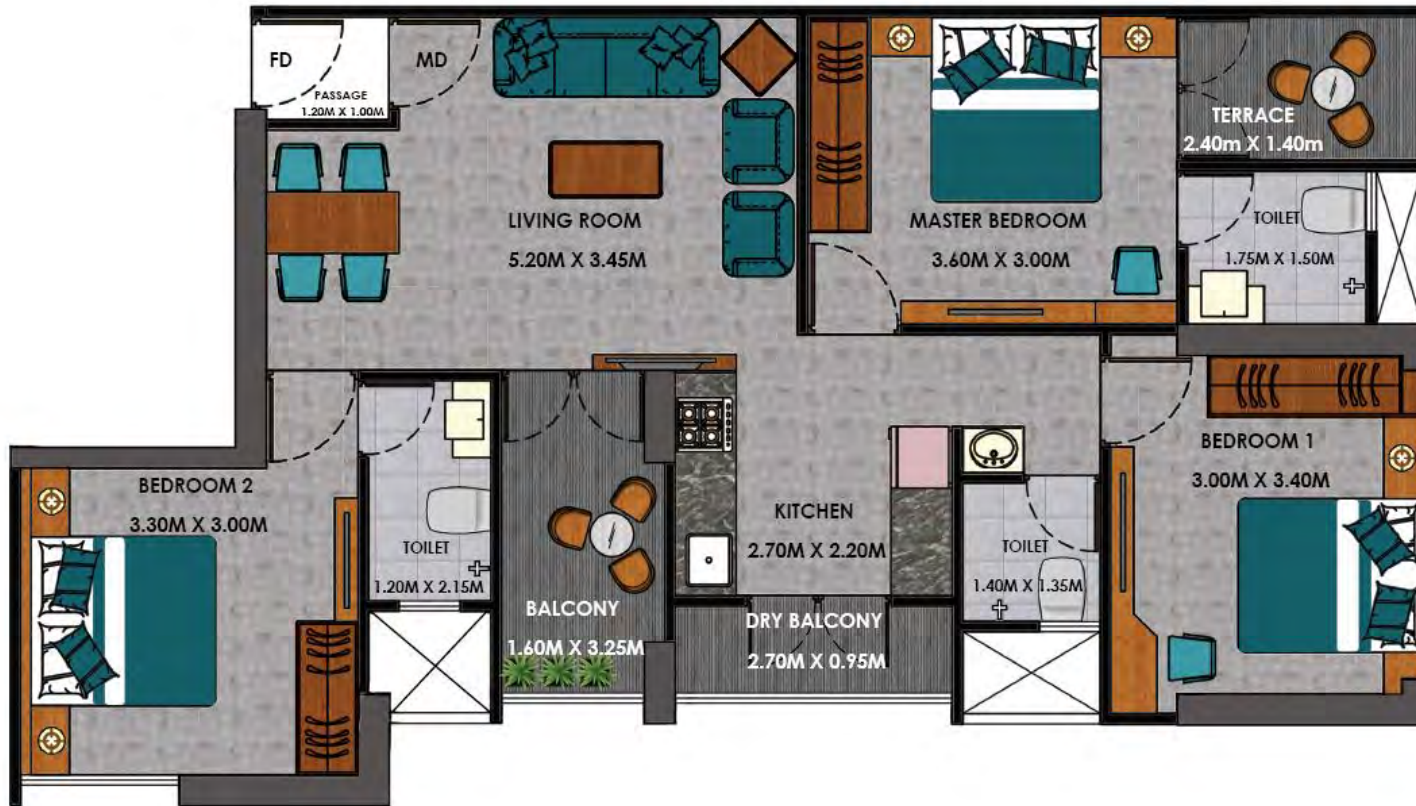
Unit Plan - 3 BHK PEARL



Area of Typical Unit in Sq. Mtrs.	
Particulars	Areas
Carpet	67.30
Open Balcony	7.70
Terrace	3.22
Entrance Passage	1.29
Total Carpet Area	79.51

Disclaimer: The above unit plans and dimensions are Indicative and for reference purpose only. All dimensions are measured from unfinished surfaces for the ease of understanding. The areas are tentatively calculated as per MahaRera and are subjected to change as per selection of the apartment. The layout, partitions, openings, finishes, furnishing, etc. are indicative and for reference purpose only. The furniture and any other detail in the unit plan layout is indicative and part of presentation/ rendering only and shouldn't be referred/ treated as any offering/ commitment in any manner it may be. All contents herewith are subject to change w/o prior notice and the contents are not to scale. The details shown in the plan may vary from apartment to apartment. The unit plan is not a legal offering and all Information should only be treated as a concept. Carpet areas are issued by the project architect.

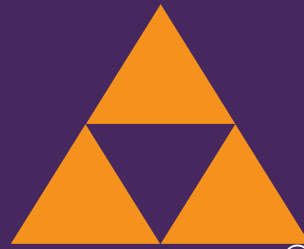
Unit Plan - 3 BHK EMERALD



Area of Typical Unit in Sq. Mtrs.

Paticulars	Areas
Carpet	66.97
Open Balcony	7.70
Entrance Passage	1.29
Total Area Carpet	75.96

Disclaimer: The above unit plans and dimensions are Indicative and for reference purpose only. All dimensions are measured from unfinished surfaces for the ease of understanding. The areas are tentatively calculated as per MahaRera and are subjected to change as per selection of the apartment. The layout, partitions, openings, finishes, furnishing, etc. are indicative and for reference purpose only. The furniture and any other detail in the unit plan layout is indicative and part of presentation/ rendering only and shouldn't be referred/ treated as any offering/ commitment in any manner it may be. All contents herewith are subject to change w/o prior notice and the contents are not to scale. The details shown in the plan may vary from apartment to apartment. The unit plan is not a legal offering and all Information should only be treated as a concept. Carpet areas are issued by the project architect.



MITTAL[®]
BROTHERS

You first.

Type your text

Connect with us:

Call Us: 8279547396, 9970037166

Disclaimer: This is a concept Brochure of 'Sky High Towers' and a visual representation of the project shown/displayed herein and are merely indicative & for illustrative purposes only. The contents herein should not be treated as part of proposal / offer and is not part of the agreement and has no legal bindings whatsoever it may be. The art works contained herein and /or other similar material etc., are for representation purpose only and do not form part of any agreement or legal binding on part of NWLLP - 'New World Landmark LLP', and its respective subsidiaries / affiliations. Contents herein are not part of the actual deliverable's and the concept plans elevations/ views etc., displayed / referred are artist impressions/representation only and subject to change. The units are planned and proposed as per sanctioned plans. The areas/dimensions mentioned herein are tentative and the developer reserves rights to make changes in the contents, whatsoever it may be.